

# AIRSPACE CHANGES, RESTRICTIONS AND EVENTS

## - AICs correct to 3 October 2011

Cancelled AICs or those for which the event(s) have passed do not feature below. Updates to published and planned AICs and planned publication dates are shown as bold text.

AIC 17/2008	Pink 137 (27 March 2008)	Notification of GPS jamming trials – The Highlands Restricted Area
AIC 23/2008	Yellow 263 (27 March 2008)	Farnborough LARS
AIC 56/2008	Pink 141 (17 July 2008)	Airborne Collision Avoidance System (ACAS) and Non-ACAS Traffic Proximity Alerting Systems (TPAS) – Interface With Air Traffic Control
AIC 92/2008	Yellow 275 (6 November 2008)	Monitoring Codes Around the London Terminal Control Area - The Use of Discrete SSR Codes for Aircraft Operating Outside of Controlled Airspace and Monitoring the Relevant Frequency
AIP Supplement 012/2009	26 March 2009	Information on the Royal Navy Airborne Surveillance and Control (ASAC) Training
Y 076/2009	10 September 2009	The Introduction of London Stansted Transponder Mandatory Zones
M 080/2009	10 September 2009	Restriction of Flying Regulations – London Stansted Transponder Mandatory Zones 24 September 2009 to 6 April 2012
Y 093/2009	5 November 2009	Revised Phraseology for Danger Area Crossing Service (DACS) and Danger Area Activity Information (DAAIS)
AIP Supplement 041/2009	3 December 2009	Information on the Royal Navy Navigational Training Flying South West Approaches
P 001/2010	28 January 2010	Air Traffic Services Outside Controlled Airspace
Y 002/2010	28 January 2010	Military Aerodrome Traffic Zones.
Y 007/2010	25 March 2010	Recommended VFR Route Between the Solent CTA and the Cherburg Peninsula/Channel Islands
Y 014/2010	22 April 2010	Common VHF Frequency For Use At Aerodromes Having No Notified Ground Radio Frequency - 'SAFETYCOM'
Y 044/2010	17 June 2010	Use of Frequency 123.45 MHz in the UK
Y 084/2010	4 November 2010	Visual Reference Points
AIP Supplement 044/2010	30 December 2010	Navigational Aid Outages - January - December 2011.
AIP Supplement 045/2010	30 December 2010	Directflight Ltd - MET Research/Drop Sonde Flights - 1 January to 31 December 2011.
W 001/2011	27 January 2011	Flying Training and Flying Tests in Private Aircraft.
Y 004/2011	24 February 2011	Changes to the Altimeter Setting Procedures for Birmingham, East Midlands and the Daventry Control Areas.
Y 008/2011	24 February 2011	CAP 413 (Radiotelephony Manual) Edition 20.
M 012/2011	24 March 2011	Restriction of Flying Regulations – West Wales Airport (Aberporth) 28 March – 28 October 2011
P 016/2011	24 March 2011	Bird Activity and Avoidance of Birdstrike Risk.

M 026/2011	21 April 2011	Restriction of Flying Regulations – Duxford Air Shows – 22 May 11, 9-10 Jul 11, 19 Aug 11, 3-4 Sep 11, 16 Oct 11.
Y052/2011	16 June 2011	Unmanned Aircraft Operations in the West Wales Area - Introduction of New Danger Areas EG D202, EG D202A, EG D202B and EG D202C and a Further Sub-division of EG D201 to form EG D201E (effective 28 July 2011).
Y055/2011	14 July 2011	Measurement, Computing and Reporting of Atmospheric Pressure - Adoption of the Hectopascal as the Unit of Measurement.
Y 069/2011	11 August 2011	Duxford Aerodrome - Special Events 2011.
Y 071/2011	11 August 2011	Royal Flight CAS(T) Arrangements - Farnborough.
P 076/2011	8 September 2011	Notification of GPS Jamming Exercise – Stanford Training Area, East Anglia between 19-23 September and 17-21 October 2011.
P 077/2011	8 September 2011	Gas Venting Sites (GVS) ENR 5.3.2.
P 079/2011	8 September 2011	ACAS and Non-ACAS Traffic Proximity Alerting Systems (TPAS) – Pilot and Air Traffic Service Provider Responsibilities.
Y 080/2011	8 September 2011	Changes to the Glasgow Control Area.
Y 082/2011	6 October 2011	Introduction of London Array and Thanet Offshore Windfarm Transponder Mandatory Zones.
Y 083/2011	6 October 2011	Gliding Activity in the UK.
M084/2011	6 October 2011	Restriction of Flying Regulations Tethered Balloon Trial, Sculthorpe, Norfolk, 8-23 October 2011
Y 085/2011	6 October 2011	Airfield and Operator Exemptions - London 2012 Olympic and Paralympic Restricted and Prohibited Airspace.

- **Remember to check NOTAMs for confirmation of RA(T) and temporary ATZ establishment.**
- **Remember to check the AIS information line on FREEPHONE 0500 354802 (+44 208 750 3939 from outside the UK) for the very latest information on airspace restrictions and activities.**
- **AICs are updated on a four-weekly basis and can be found on the AIS website, [www.ais.org.uk](http://www.ais.org.uk).**
- **Most airspace-related AICs also include at least one supporting map showing the airspace in question.**
- **To access AICs visit the AIS website, select ‘Aeronautical Information Circulars (AIC)’ on the home page, and click the link associated with the colour of AIC you’re looking for. AICs are then listed in groups by title and number.**

- To access NOTAMs visit the AIS website, select 'NOTAM' on the home page and follow the instructions.
- Remaining AIC distribution dates for 2011 are: 6 October, 3 November and 1 December.

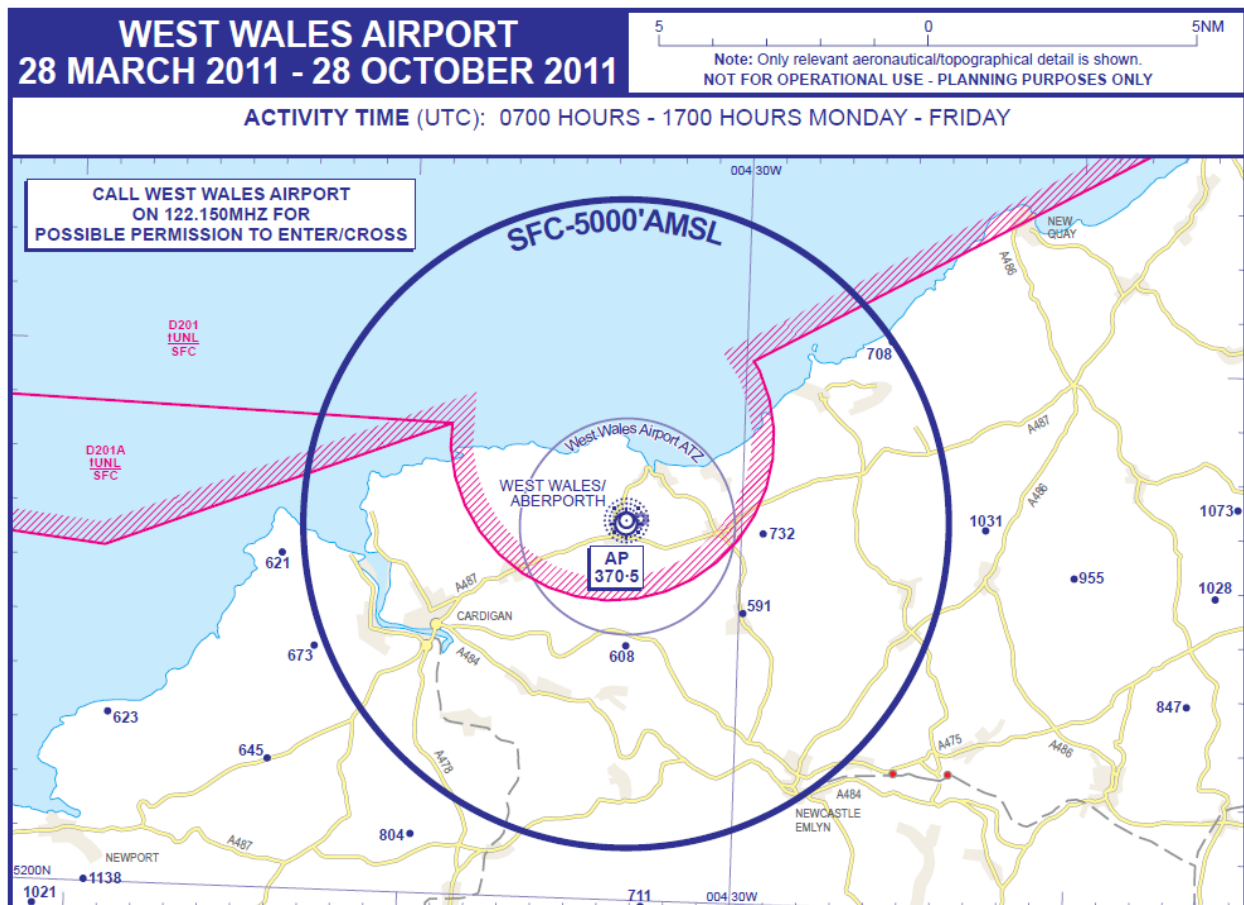
## CLOSURE OF RAF LYNEHAM

The Class D Lyneham CTR and CTA was disestablished with effect from midnight 30 September 2011. Bristol ATC has retained the following Visual Reference Points:

VRP		VOR/DME fix
Avebury	512541N 0015117W	CPT 263°/24 nm
Chippenham	512736N 0020724W	CPT 269°/34 nm
Dezives	512048N 0015918W	CPT 256°/30 nm
Malmesbury	513506N 0020612W	CPT 283°/33 nm
Marlborough	512512N 0014342W	CPT 260°/19 nm
Melksham	512230N 0020818W	CPT 261°/35 nm
Wroughton	513033N 0014759W	CPT 275°/22 nm

CAA IN-2011/69: Disestablishment of RAF Lyneham Control Zone (CTR)/Control Area (CTA) & Regularisation of Bristol CTAs 8 and 9 ([www.caa.co.uk/docs/33/InformationNotice201169.pdf](http://www.caa.co.uk/docs/33/InformationNotice201169.pdf)) refers

## WEST WALES AIRPORT (ABERPORTH) 28 MARCH – 28 OCTOBER 2011



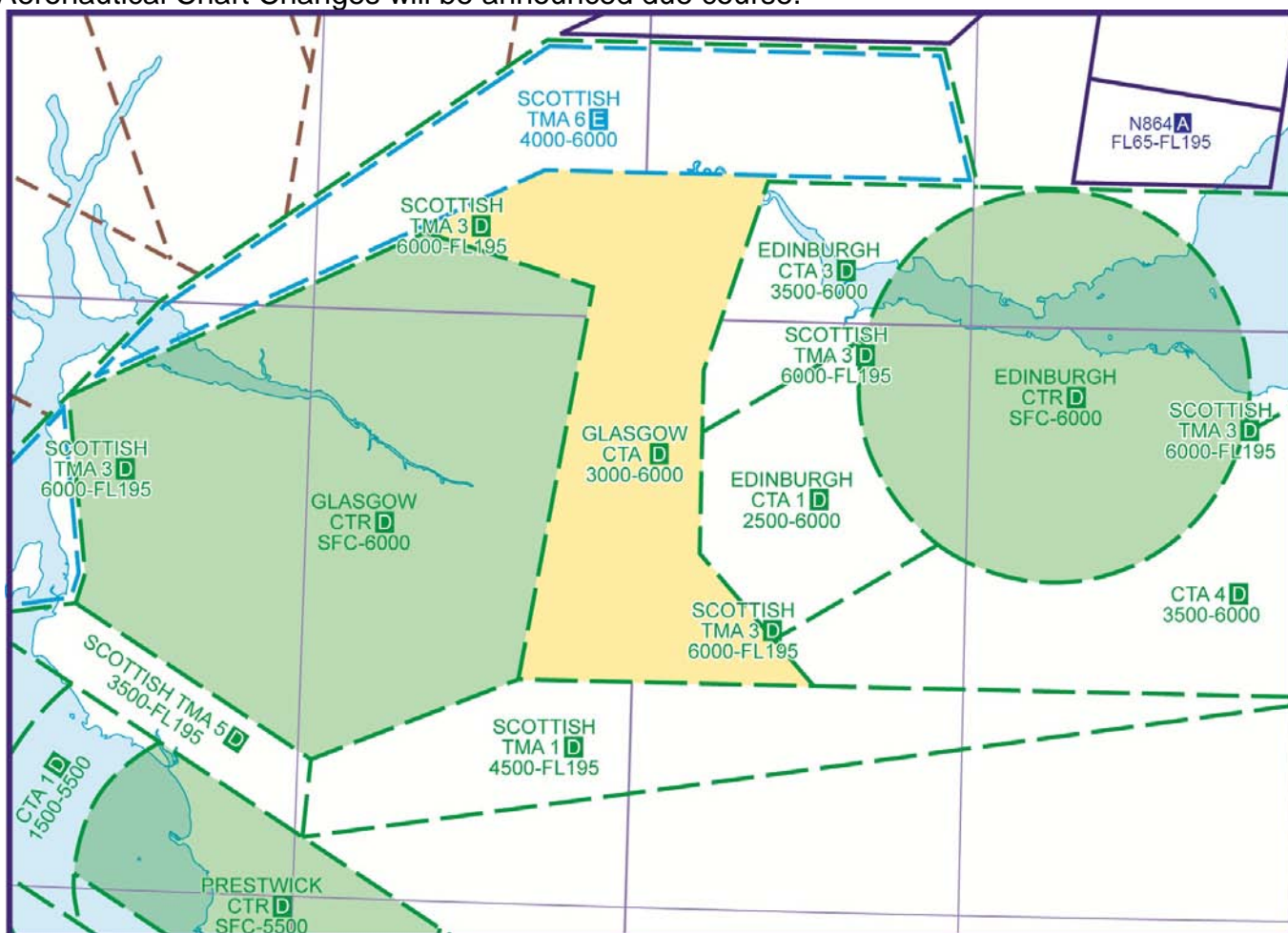
More details can be found in AIC M 012/2011

# RECLASSIFICATION OF THE GLASGOW CTA

Following an AIRPROX incident on 23 July 2011 between a glider and civil air transport aircraft within the Glasgow CTA, the CAA considers that a safety critical risk exists. Consequently, the CAA has decided to reclassify the Glasgow CTA from Class E to Class D as an interim safety measure, pending the introduction of permanent arrangements. The purpose of the interim change is to enhance safety of air traffic operations in the area and to better reflect air traffic service provision within it. Glasgow Air Traffic Control Unit will continue to act as Controlling Authority, and the contact frequency for the subject airspace will remain 119.100 MHz.

The CTA base will rise from 2500 ft amsl to 3000 ft amsl. There are no changes to the current lateral limits as described in the UK AIP at EGPF AD 2.17 — ATS AIRSPACE (page AD 2-EGPF-1 - 5) and depicted at page AD 2-EGPF-4-1.

The change took effect at 0001Z on Friday 16 September 2011 but **will not** be reflected in the AIP or aeronautical charts, however permanent arrangements that will necessitate AIP and Aeronautical Chart Changes will be announced due course.

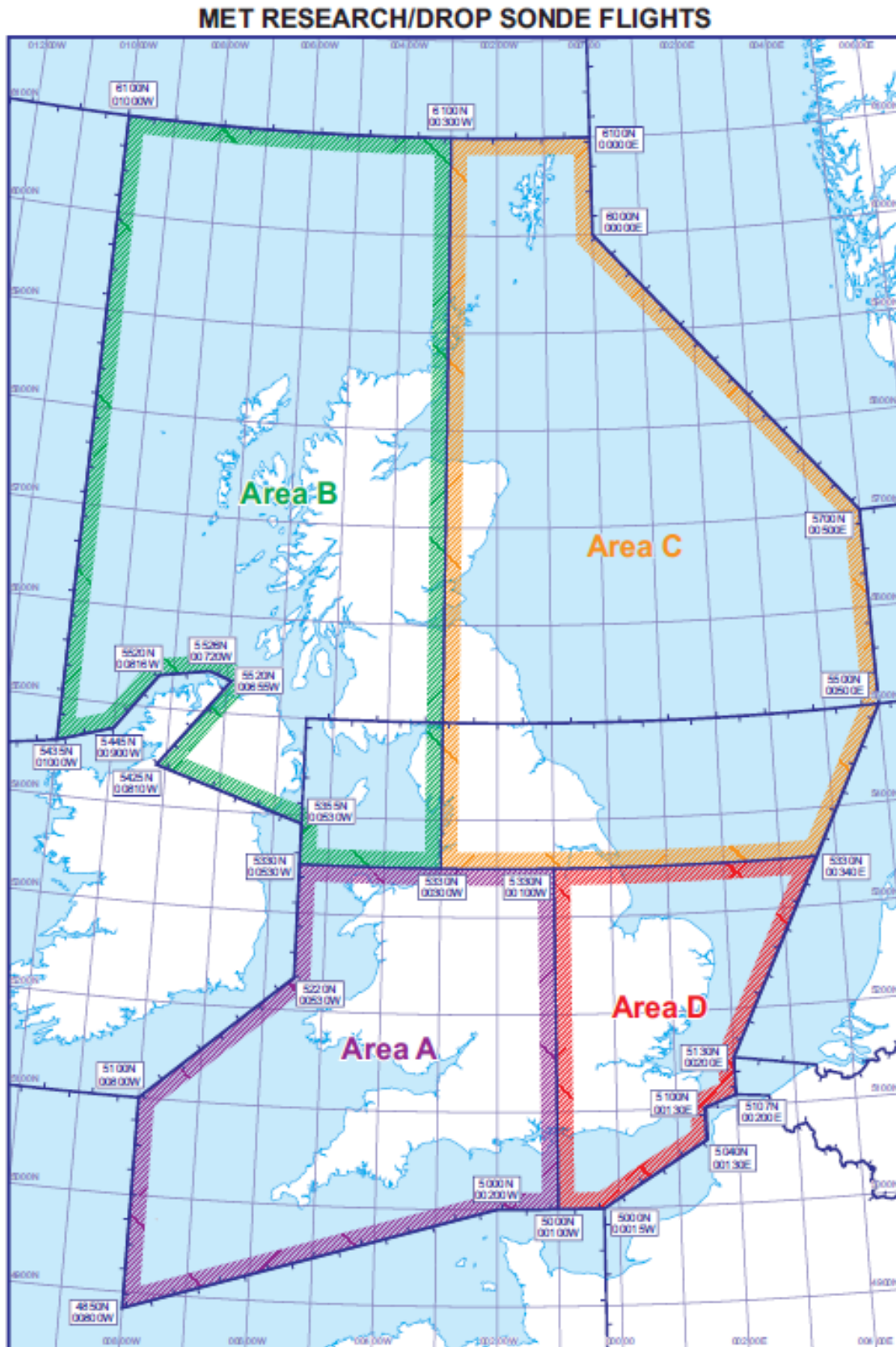


2011\54 Glasgow CTA 4 AUG 11

More details can be found in NOTAM A2161/11 and **AIC Y 080/2011**

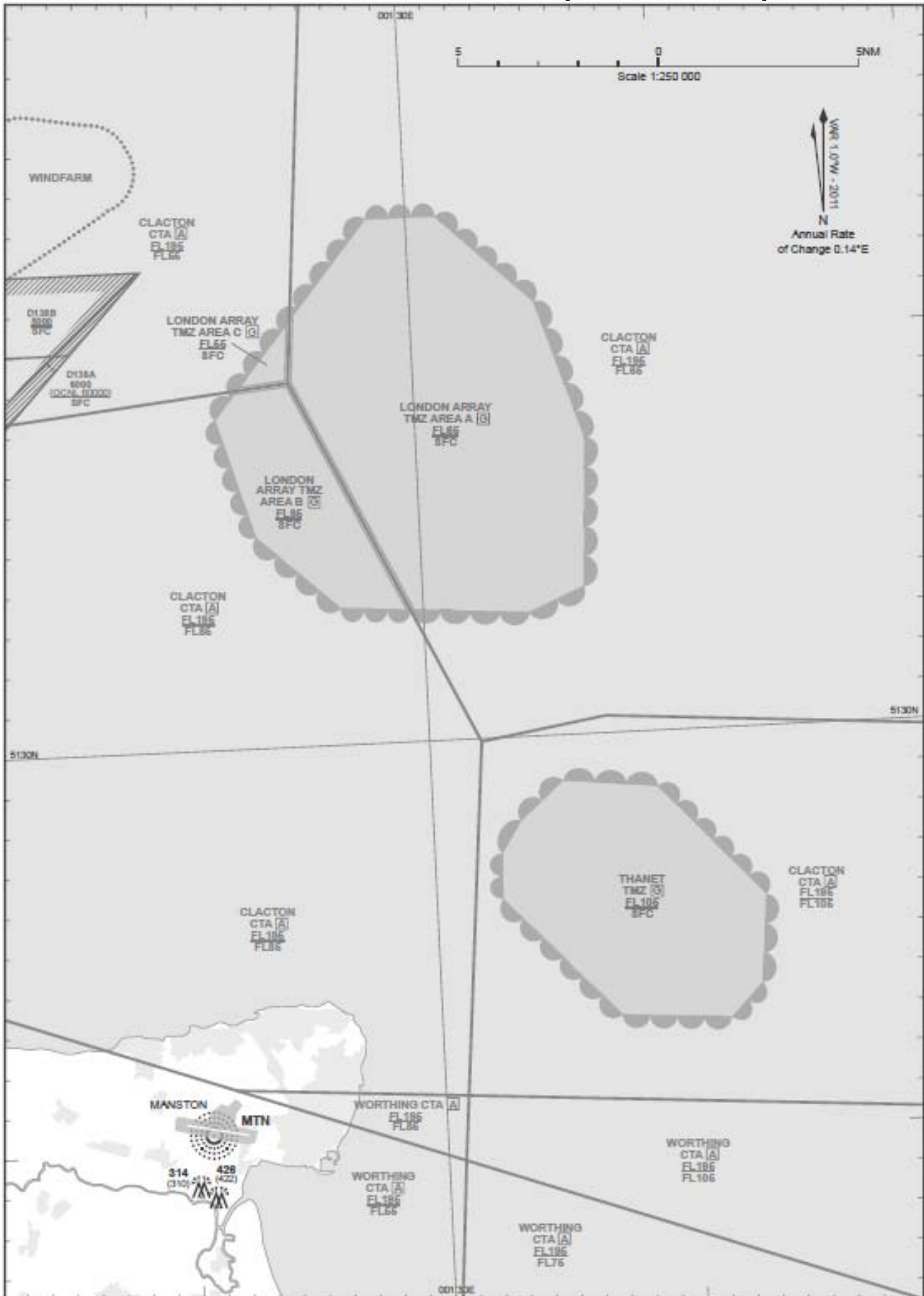
# DIRECTFLIGHT LTD MET RESEARCH/DROP SONDE FLIGHTS - 1 JANUARY TO 31 DECEMBER 2011.

Long duration metrological research flights are conducted by Directflight Ltd utilizing a BAe 146 research aircraft. Flights may include ultra-low level flying (down to 100 ft agl) and the dispensing of small lightweight parachute assisted drop sondes. The operating areas are as detailed in **AIP Supplement 045/2010** and illustrated below. Activity areas dates and times will be the subject of a NOTAM (NW) issued 24 hours in advance.



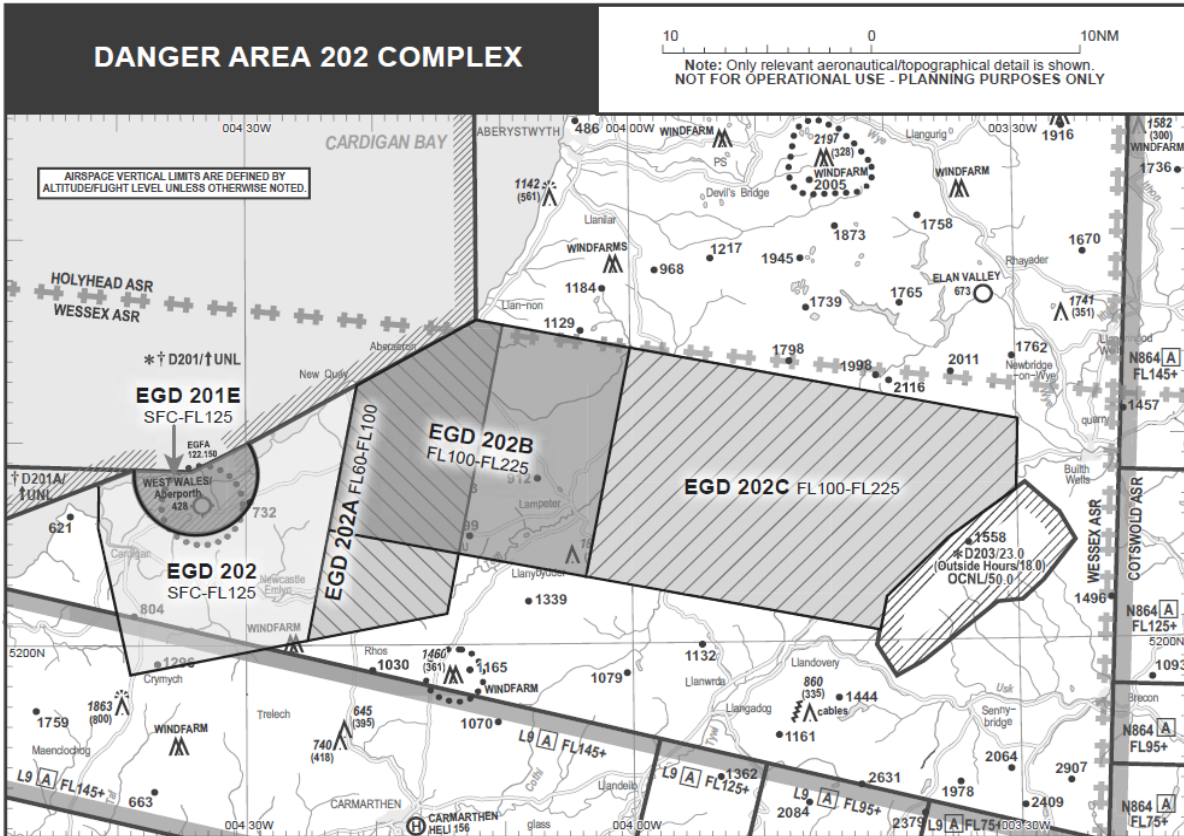
More details can be found in AIP Supplement 045/2010

# INTRODUCTION OF LONDON ARRAY AND THANET OFFSHORE WINDFARM TRANSPONDER MANDATORY ZONES (17 NOV 11)



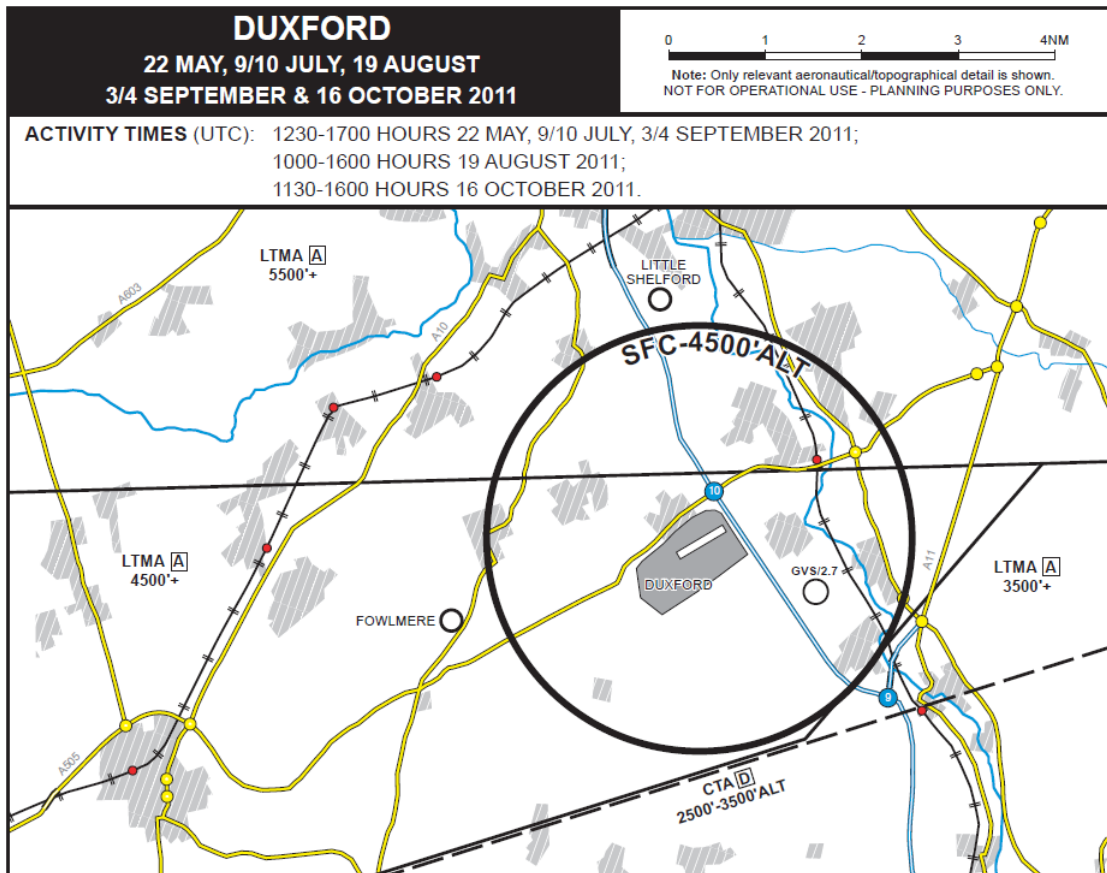
More details can be found in **AIC Y 082/2011**

# INTRODUCTION OF NEW DANGER AREA EG D202, + SUB-DIVISION OF EG D201 – 28 JULY 2011



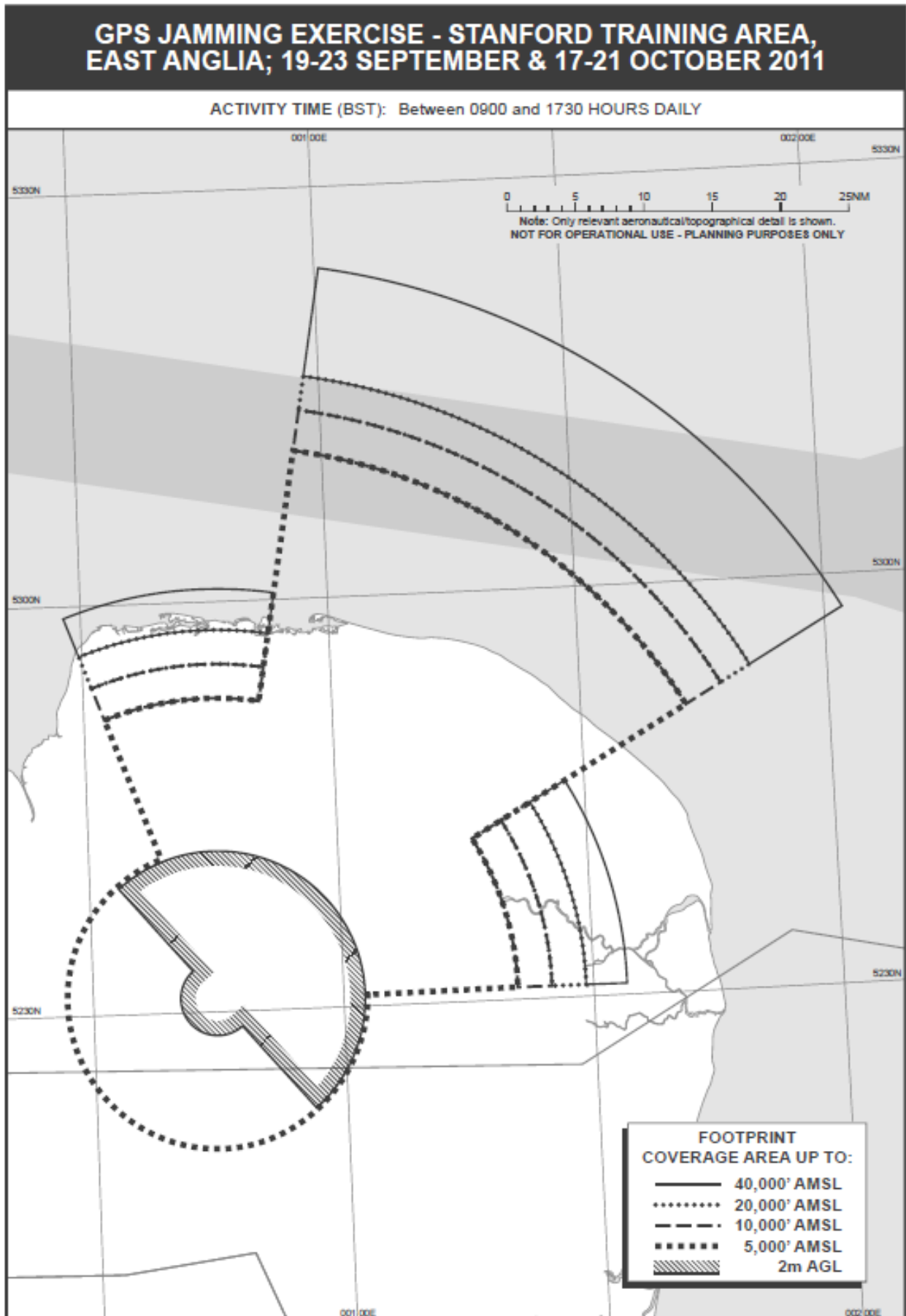
More details can be found in AIC **Y 052/2011**

## DUXFORD AIR SHOW – 16 OCT 11



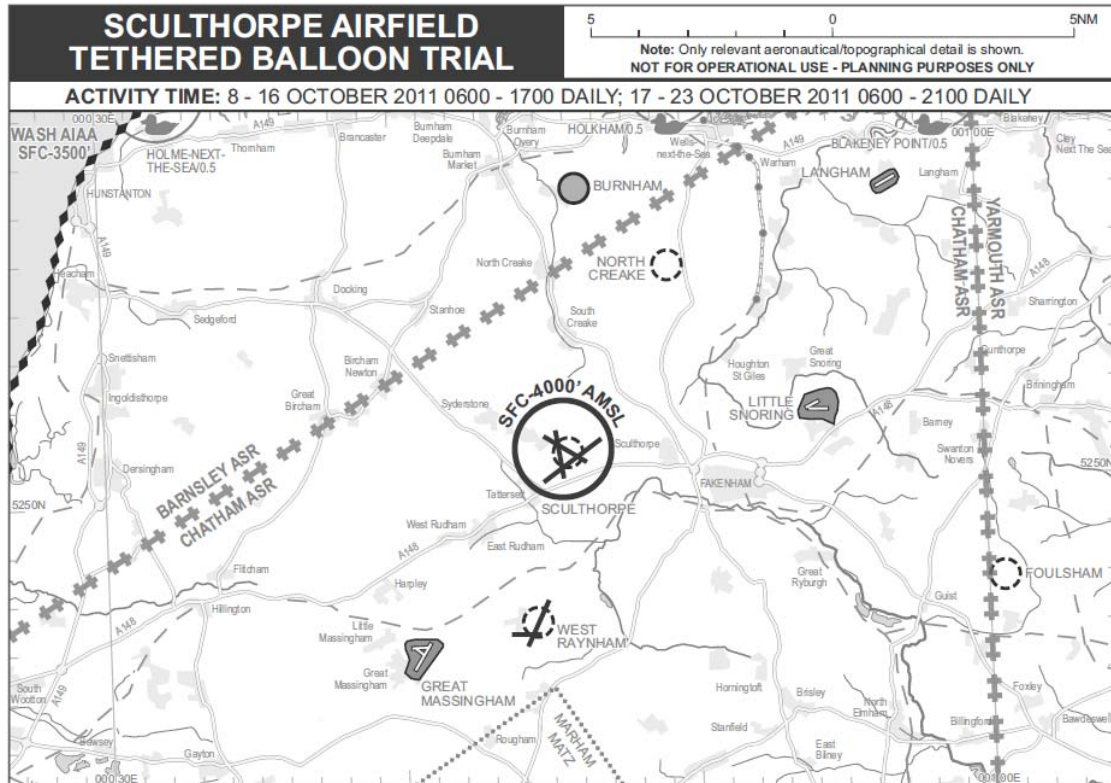
More details can be found in AICs **M 026/2011** and **Y 069/2011**

# GPS JAMMING EXERCISE – STANFORD TRAINING AREA, EAST ANGLIA 19-23 SEPTEMBER AND 17-21 OCTOBER 2011



More details can be found in AIC P 076/2011

# TETHERED BALLOON TRIAL, SCULTHORPE, NORFOLK, 8-23 OCTOBER 2011



More details can be found in AIC [M 084/2011](#)

## LONDON 2012 OLYMPIC AND PARALYMPIC RESTRICTED AND PROHIBITED AIRSPACE

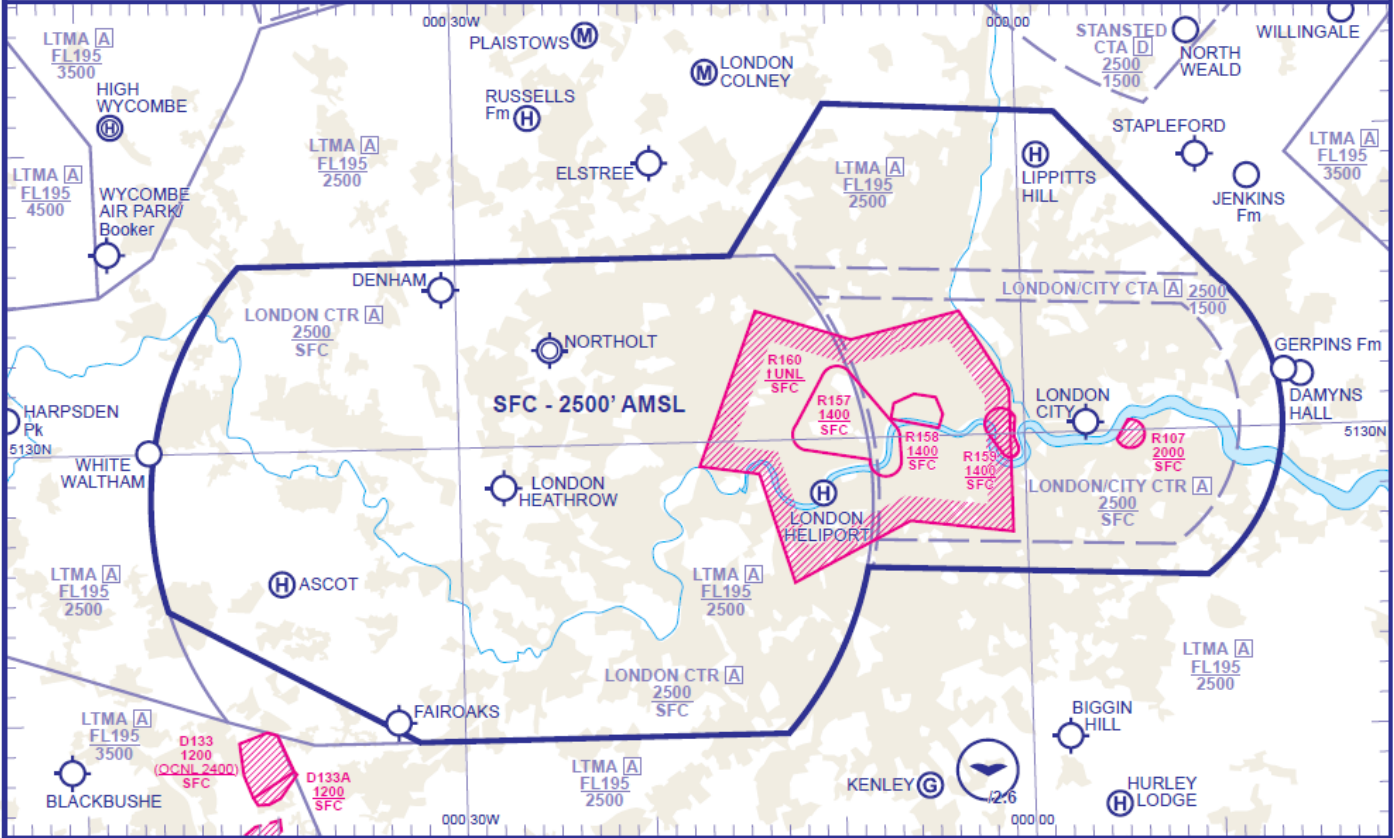
**SEE NEXT PAGE**

# LONDON 2012 OLYMPIC PROHIBITED AIRSPACE

10 0 10NM

Note: Only relevant aeronautical/topographical detail is shown.  
NOT FOR OPERATIONAL USE - PLANNING PURPOSES ONLY

ACTIVITY TIME: 14 JULY 2012 - 15 AUGUST 2012, H24

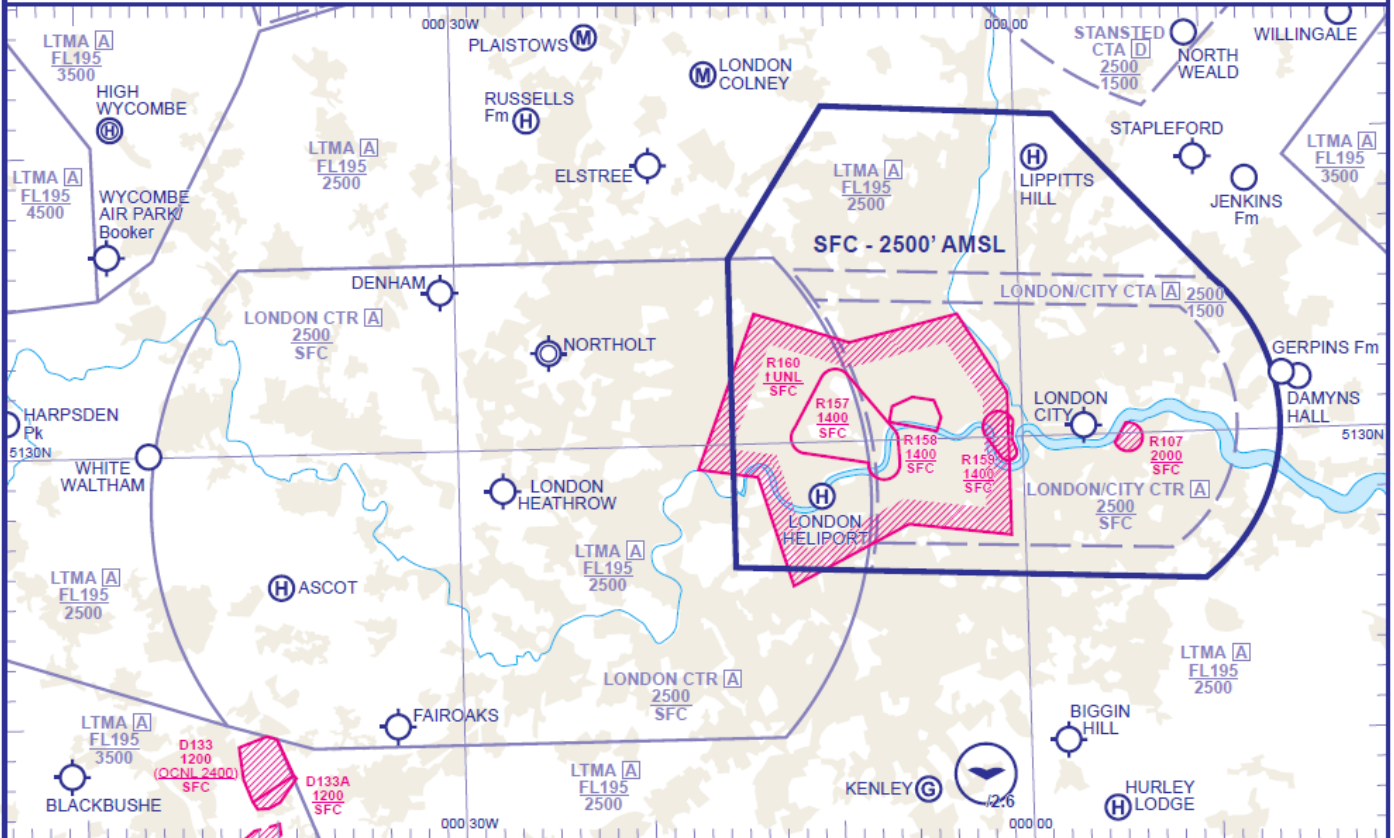


# LONDON 2012 PARALYMPIC PROHIBITED AIRSPACE

10 0 10NM

Note: Only relevant aeronautical/topographical detail is shown.  
NOT FOR OPERATIONAL USE - PLANNING PURPOSES ONLY

ACTIVITY TIME: 16 AUGUST - 12 SEPTEMBER 2012, H24





## Latitudes and Longitudes of Restricted, Prohibited and Paralympic Areas

Name	Point	Description	Latitude	Longitude
Restricted Area	1	Luton CTA 7 LTMA 6	520606N	0001712W
Restricted Area	2	LTMA 3/18	520606N	0002550E
Restricted Area	3	LTMA 3/7	520226N	0004040E
Restricted Area	4	LTMA 3/7	514401N	0004412E
Restricted Area	5	LTMA 3/7 Clacton CTA 11	513417N	0005000E
Restricted Area	6	LTMA 3 Worthing CTA 1	512120N	0005000E
Restricted Area	7	LTMA 3 Worthing CTA 1	510906N	0004618E
Restricted Area	8	Calculated Point Southern LTMA 3 boundary & extended LTMA 1 line	505940N	0001814E
Restricted Area	9	LTMA 1/3	505541N	0001007W
Restricted Area	10	LTMA 1/3/4/14	505832N	0003428W
Restricted Area	11	LTMA 4/L620 northern extremity intersection	510652N	0004829W
Restricted Area	12	LTMA 4/11/12	512430N	0010000W
Restricted Area	13	LTMA 4	513433N	0010000W
Restricted Area	14	Luton CTA 4	514659N	0004838W
Restricted Area	15	Luton CTA 2/3/5	514905N	0003647W
Restricted Area	16	Luton CTA 2/5/6/8	515244N	0003828W
Restricted Area	17	Luton CTA 5/6	515258N	0003709W
Restricted Area	18	Luton CTA 5/6/7 LTMA 6	520038N	0002832W
Restricted Area	19	Luton CTA 7 LTMA 6 (Origin)	520606N	0001712W
Prohibited Area	1	London CTR	513611N	0004133W
Prohibited Area	2	Calculated Point - London CTR Boundary	513611N	0001524W
Prohibited Area	4	Junction 24 of M25	514111N	0001015W
Prohibited Area	5	Junction 26 of M25 (A121 - Waltham Abbey)	514042N	0000203E
Prohibited Area	6	London City CTA	513505N	0001022E
Prohibited Area		<i>Clockwise Arc of circle 6.5NM centred on 513019N 0000319E to....</i>		
Prohibited Area	7	London City CTA	512507N	0000932E
Prohibited Area	8	London City CTA	512541N	0000828W
Prohibited Area		<i>Clockwise Arc of circle 12NM centred on 512812N 0002713W to....</i>		
Prohibited Area	9	London CTR	512013N	0001255W
Prohibited Area	10	London CTR - WOD/OCK and Southern boundary of London CTR	512013N	0003224W
Prohibited Area	11	London CTR - 12NM Heathrow circle and WOD/OCK intersect	512444N	0004535W
Prohibited Area		<i>Clockwise Arc of circle 12NM centred on 512812N 0002713W to....</i>		
Prohibited Area	12	London CTR (origin)	513611N	0004133W
Paralympic Area	1	Calculated Point - London CTR Boundary	513611N	0001524W
Paralympic Area	2	Junction 24 of M25	514111N	0001015W
Paralympic Area	3	Junction 26 of M25 (A121 - Waltham Abbey)	514042N	0000203E
Paralympic Area	4	London City CTA	513505N	0001022E
Paralympic Area		<i>Clockwise Arc of circle 6.5NM centred on 513019N 0000319E to....</i>		
Paralympic Area	5	London City CTA	512507N	0000932E
Paralympic Area	6	London City CTA	512541N	0000828W
Paralympic Area	7	Calculated Point - London City CTR extended West	512554N	0001524W
Paralympic Area	8	Calculated Point - London CTR Boundary (Origin)	513611N	0001524W

More details can be found in AIC **Y 085/2011**

**And finally.....**

**Details of all airspace restrictions feature  
in the daily AIS Information Line  
message**

**(0500 354802 or +44 208 750 3939)**

**and is included on the Pre-flight  
Information Bulletins (PIB) through the  
AIS website <http://www.ais.org.uk>**