

# Fly SAFE

## Stansted Transponder Mandatory Zones

Transponder Mandatory Zones (TMZ-1 and TMZ-2) are established below Stansted Control Areas (CTA-1 and CTA-2) and are Class G airspace. The borders are coincident with the CTA and extend from the surface to 1,500 feet on the Stansted QNH. The TMZ boundaries are depicted on the VFR charts by magenta semi-circles.

## Squawk

Ensure you are Mode S equipped and squawking Mode A and Mode C.

## Altitude

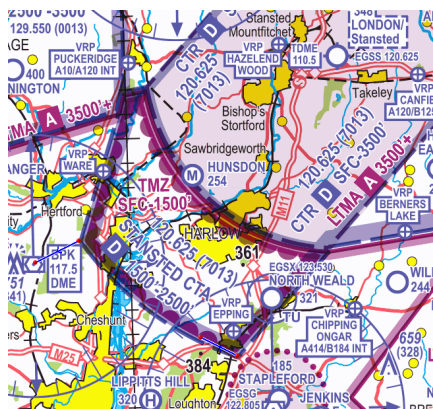
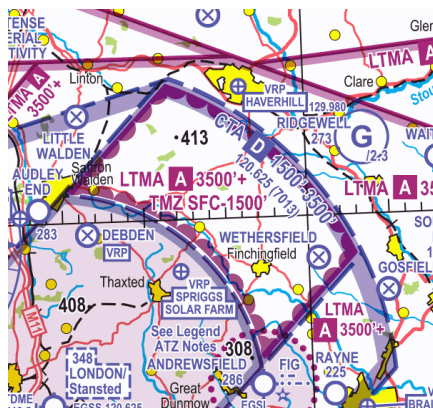
Not above 1,500 feet AMSL Stansted QNH.

## Frequency

If you are not Mode S equipped and you are unable to display Mode A and Mode C, contact Farnborough Radar (132.800 MHz) or, if closed, Stansted Radar (120.625 MHz).

## Enter

By checking you are compliant with the ruleset you may enter the TMZ



# Stansted Transponder Mandatory Zones

TMZ-1 and TMZ-2 are located below the CTA-1 and CTA-2 and are Class G airspace.

The TMZ extend from the surface to 1,500 feet on the Stansted QNH.

They are established in accordance with UK SERA.6005 and suitably equipped aircraft may access a Stansted TMZ without ATC approval.

**A suitably equipped aircraft** is one that is Mode S Elementary Surveillance equipped (UK AIP Gen 1.5).

**Pilots of non-Mode S transponder:** Mode A transponder or non-transponder equipped aircraft may be granted access to the TMZ subject to specific ATC approval. This approval may be obtained from:

- Farnborough Radar on frequency 132.800 MHz during their hours of operation 0800-2000 (0700-1900); or
- Stansted Radar on frequency 120.625 MHz, at other times.

**Operate the transponder at all times during flight** in accordance with UK SERA.13001 (a), when an aircraft carries a serviceable SSR transponder, the pilot shall operate the transponder at all times during flight, regardless of whether the aircraft is within or outside airspace where SSR is used for ATS purposes.

Pilots are to operate the transponder if equipped and to the full extent of its capabilities.

**Pilots opening into or out of North Weald and Hunsdon aerodromes who are unable to comply with the Mode S equipage requirements** may operate in the TMZ within the notified Areas of Operation for those aerodromes.

**Beat confirmation bias!** Check, check and check again your transponder prior to operating within a TMZ.

**Be familiar with the UK AIP EGSS AD 2.22 Section 8.  
Comply with the ruleset. Fly SAFE.**