

# Fairoaks Aerodrome

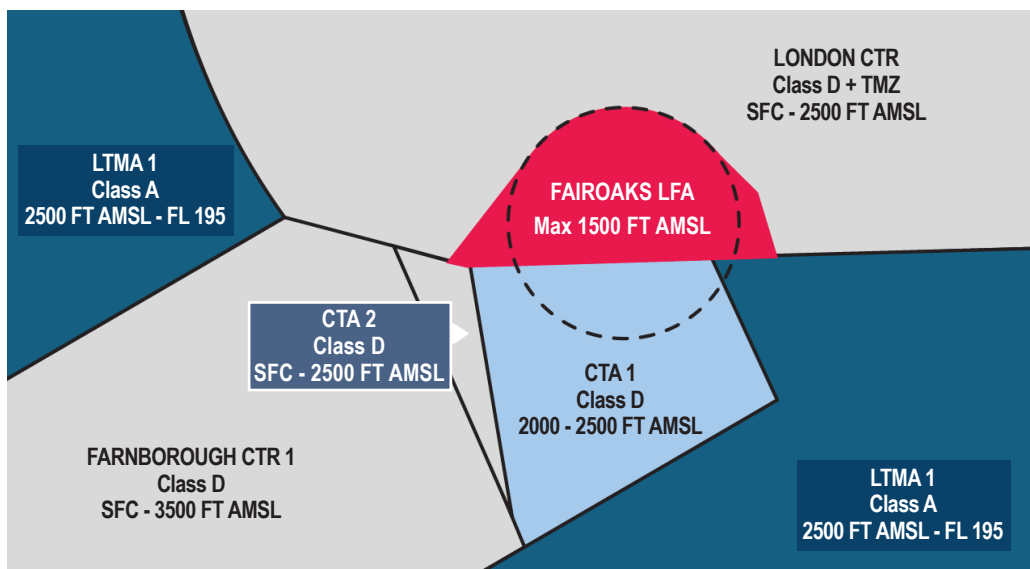
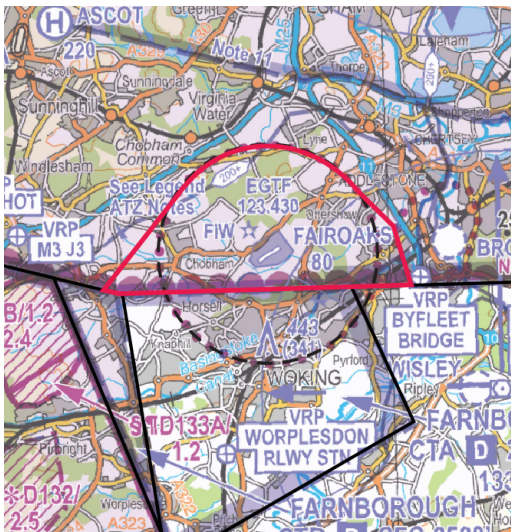
## Local Flying Area (LFA)

Fairoaks Aerodrome (EGTF) lies within the London Control Zone (CTR) and beneath the Farnborough Control Area (CTA-1) to the South.

A Local Flying Area (LFA) is established within the London CTR.

Pilots must remain below the maximum altitude of 1,500 feet (London QNH) when flying within the Fairoaks LFA.

REMEMBER TAKE 2 and consider increasing the distances in case of turbulence or windy conditions.



This information is for guidance only. Regulated information is in the AIP, Part 3, AD 2 AERODROMES, EGTF FAIROAKS.

# Fairoaks Aerodrome

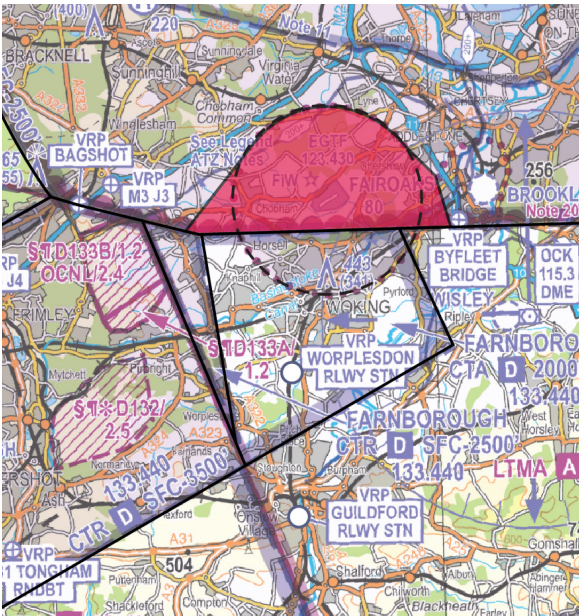
## When flying at Fairoaks Aerodrome

- Operate on the London QNH.
- Inbound aircraft and circuit traffic: Squawk 7010, unless otherwise instructed.
- Circuit altitude is 1,100 feet AMSL for fixed-wing aircraft and 800 feet for rotary aircraft.
- Be aware of the prevailing wind conditions. Remain within the LFA/ATZ.

## Arrivals/Departures

### Pilots should

- Check you are familiar with the Worpleston and Guildford Railway Station Visual Reference Points (VRP).
- Squawk 7010 when inbound to the aerodrome, unless otherwise instructed.
- Obtain a LARS from Farnborough or use their FMC by squawking 4572
- Check you are familiar with airspace structures, local operating and general circuit procedures.
- Apply Threat and Error Management in your planning and flying.



## Frequencies

Unit	Frequency
Fairoaks Radio	123.430 MHz
Farnborough LARS West	125.250 MHz
Heathrow Radar	125.625 MHz

## More Information

Airspace & Safety Initiative hot-spot narrative No.39 – Farnborough Controlled Airspace: Fairoaks Aerodrome: [airspacesafety.com/hot-spot-narratives/](https://airspacesafety.com/hot-spot-narratives/)

This information is for guidance only. Regulated information is in the AIP, Part 3, AD 2 AERODROMES, EGTF FAIROAKS.