

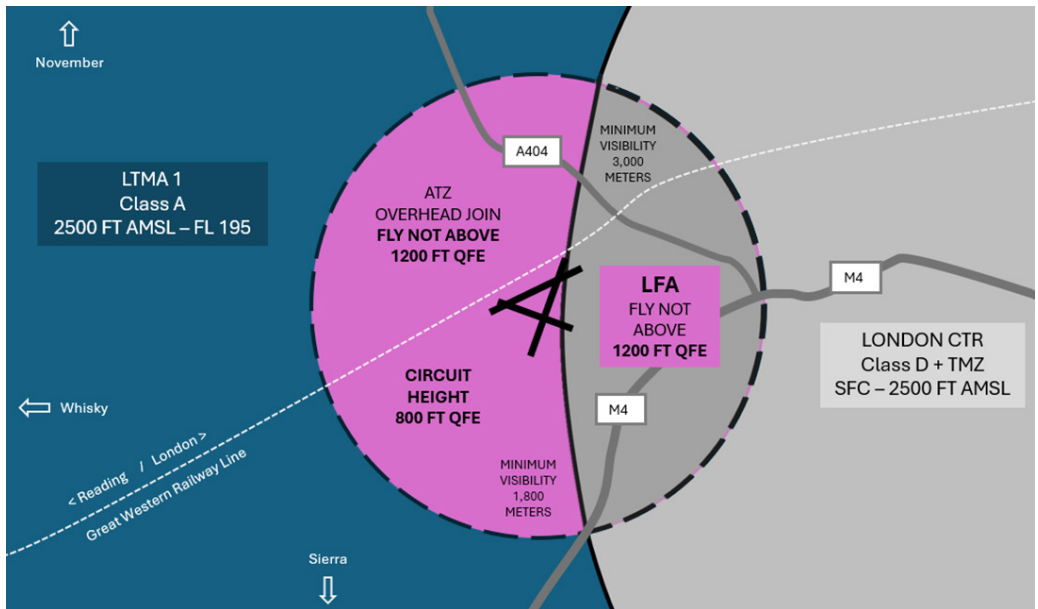
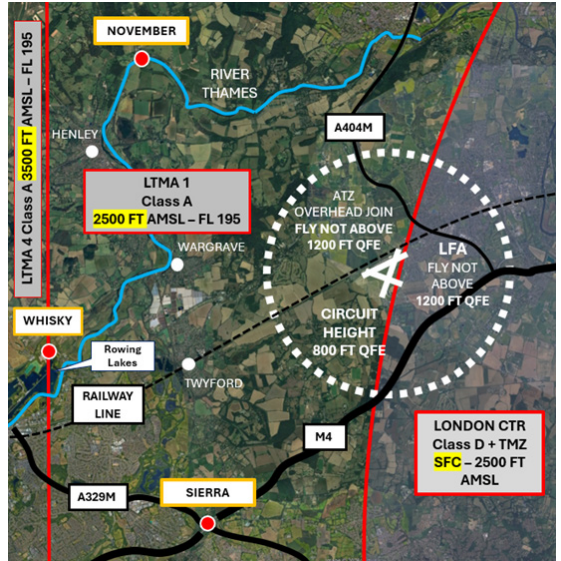
# White Waltham Aerodrome

White Waltham Aerodrome (EGLM) lies partly within the London Control Zone (CTR) and beneath the London Terminal Control Area (TMA-1).

A Local Flying Area (LFA) is established within the London CTR. A maximum altitude of 1,500 feet (London QNH) must be adhered to when flying within the White Waltham LFA.

## REMEMBER: TAKE 2

Consider increasing this buffer in cases of thermic or windy conditions.



This information is for guidance only. Regulated information is in the AIP, Part 3, AD 2 AERODROMES, EGLM WHITE WALTHAM.

# White Waltham Aerodrome

## When flying at White Waltham Aerodrome

- Operate on the White Waltham QFE
- Overhead joins are to be made at 1,200 feet QFE for fixed-wing aircraft
- Circuit altitude is 800 feet QFE for fixed-wing aircraft
- Be aware of the prevailing wind conditions. Remain within the LFA/ATZ
- Make use of ground features (A404/M4) to maintain Situational Awareness
- Familiarise yourself with airspace structures, local operating and general circuit procedures – [www.wlac.co.uk](http://www.wlac.co.uk)
- Be aware of other traffic / make accurate position reports

## Arrivals/Departures

- Pilots of fixed-wing aircraft are advised to report their position in relation to, but not necessarily overhead, the appropriate published reporting points at 1,200 feet QFE
- Pilots of helicopters should remain clear of the fixed-wing circuit and follow the published guidance
- Pilots should familiarise themselves with the VRPs and prominent ground features (A404/M4, Railway Line, River Thames)
- Obtain a LARS from Farnborough or utilise their FMC by squawking 4572
- Apply Threat and Error Management when planning and flying

## Frequencies

Unit	Frequency
Waltham Radio	122.605 MHz
Farnborough LARS West	125.250 MHz
Heathrow Radar	125.625 MHz

## More information

Airspace & Safety Initiative hot-spot narrative No.41 – White Waltham Aerodrome - [airspacesafety.com/hot-spot-narratives](http://airspacesafety.com/hot-spot-narratives)

This information is for guidance only. Regulated information is in the AIP, Part 3, AD 2 AERODROMES, EGLM WHITE WALTHAM.